

# DirectCut Setup

Technical Support Bulletin

## Setup for AutoCAD™ for DirectCut driver

Last Update 5-25-7

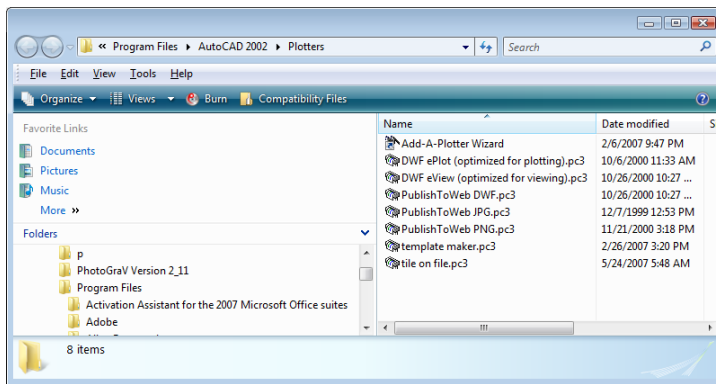
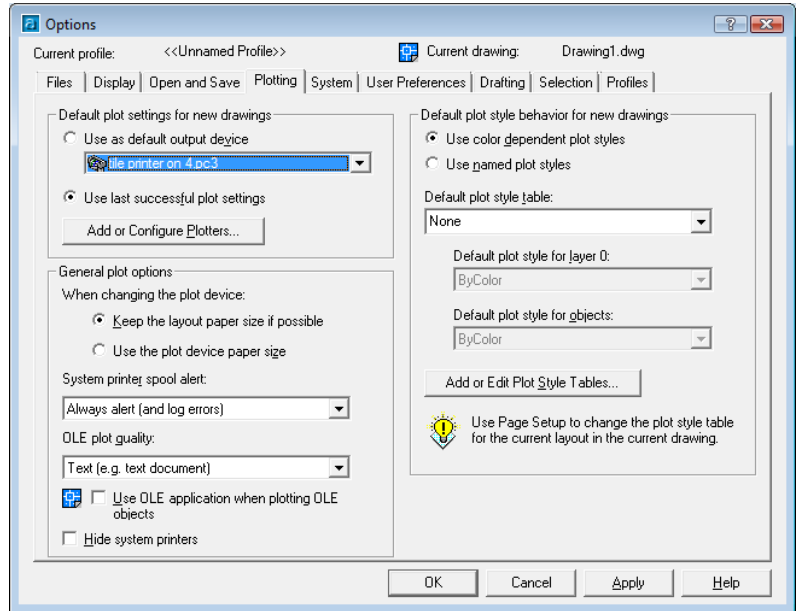
**Abstract:** When printing using AutoCAD to the Allen DirectCut driver it is useful to create a pc3 file for the system printer to save the settings of the driver. This procedure walks through the process of creating the driver.

### Start AutoCAD

Click on Tools -> options -> Plotting and select Use last successful plot settings in the default plot settings for new drawings. This keeps some of the settings in the plot menu so you don't have to reset them.

Then click on file -> plotter manager,

click on add a plotter wizard

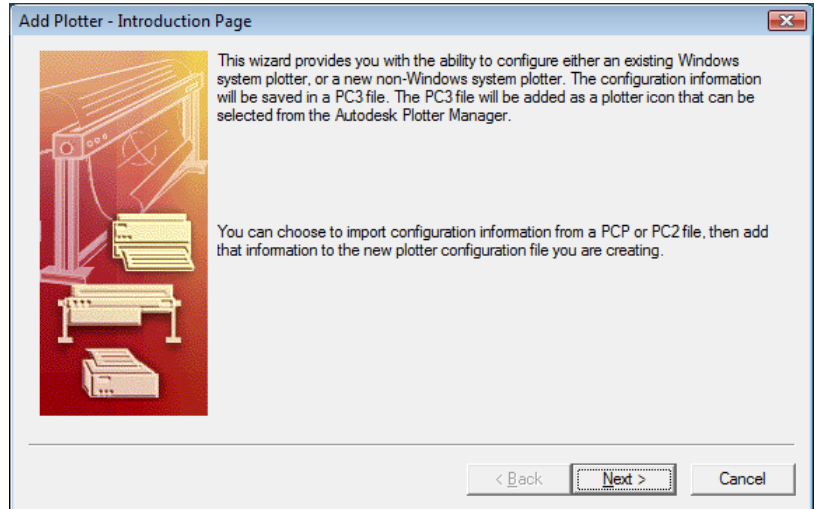


56 Kendall Pond Road  
Derry, NH 03038  
603-216-6344

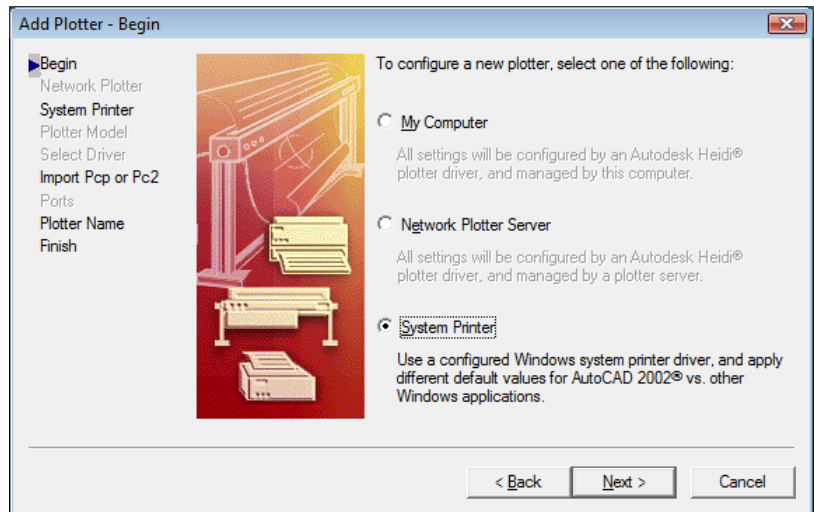


All products made in America

next

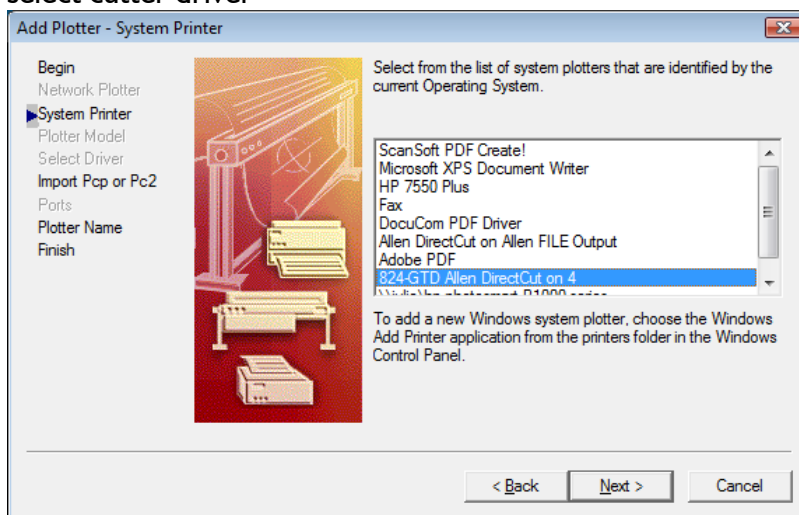


system printer

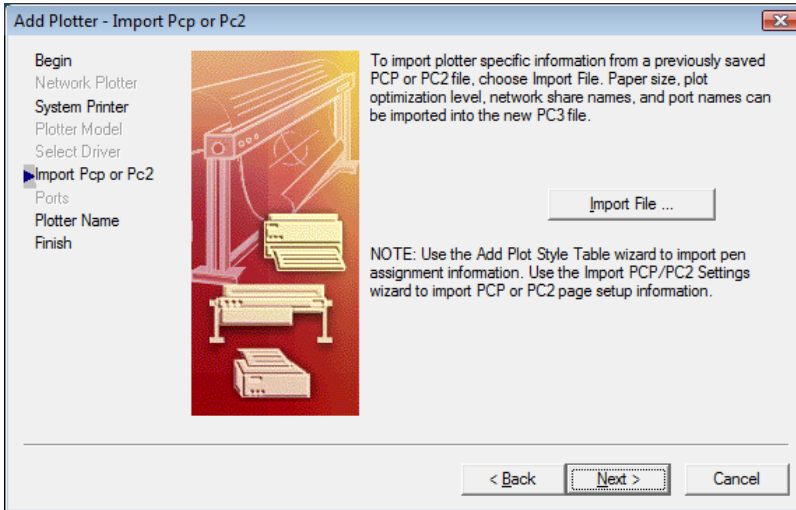


next

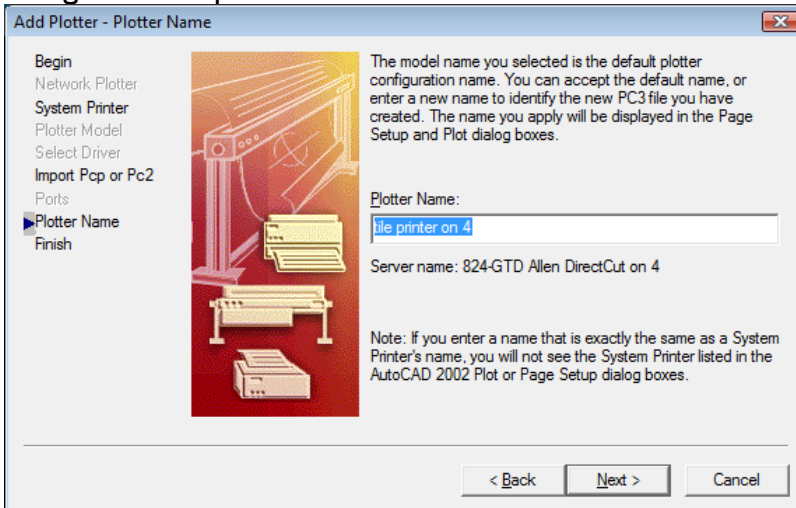
select cutter driver



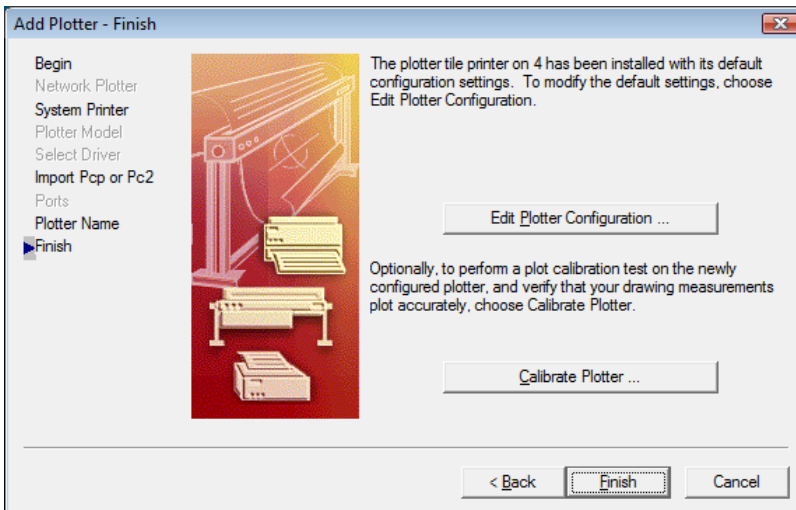
next



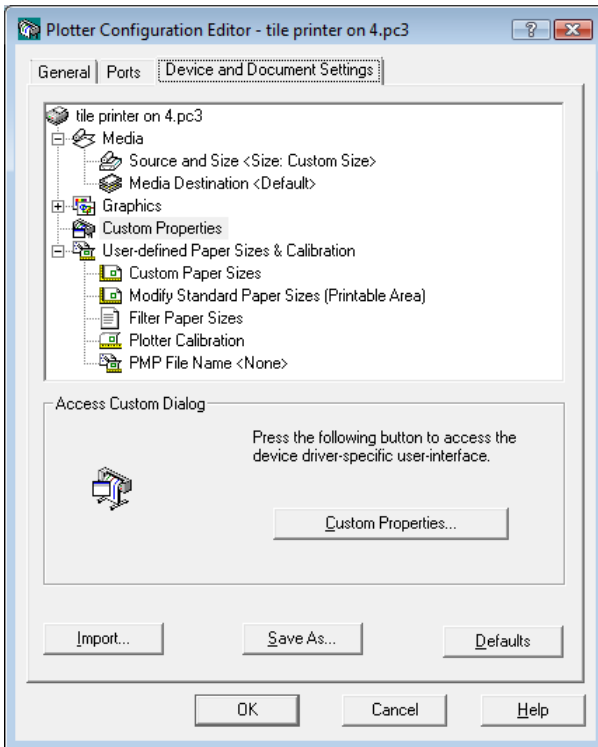
change name of printer



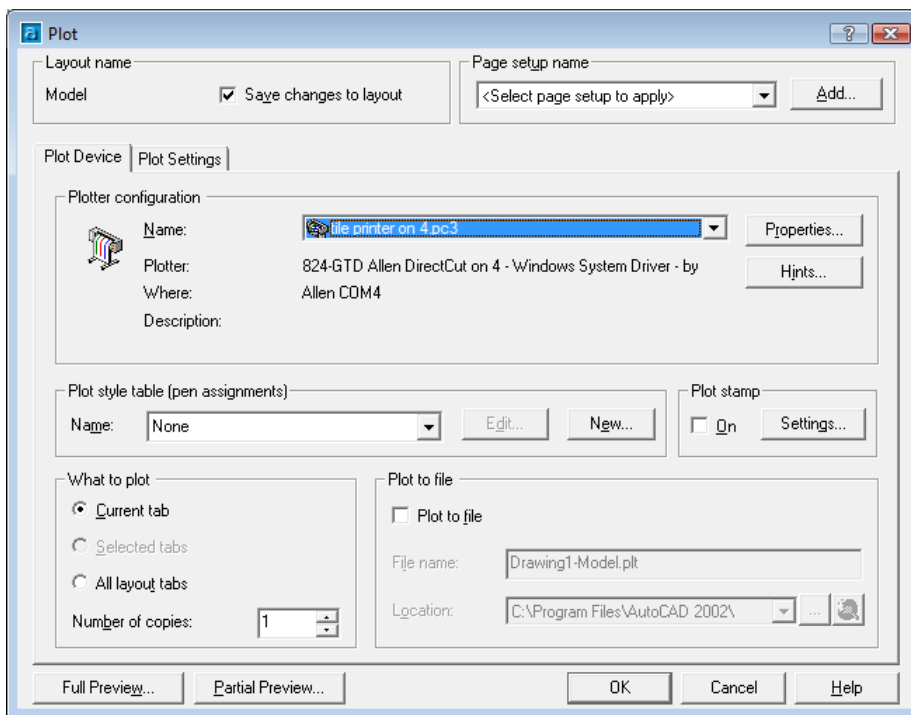
click on finish



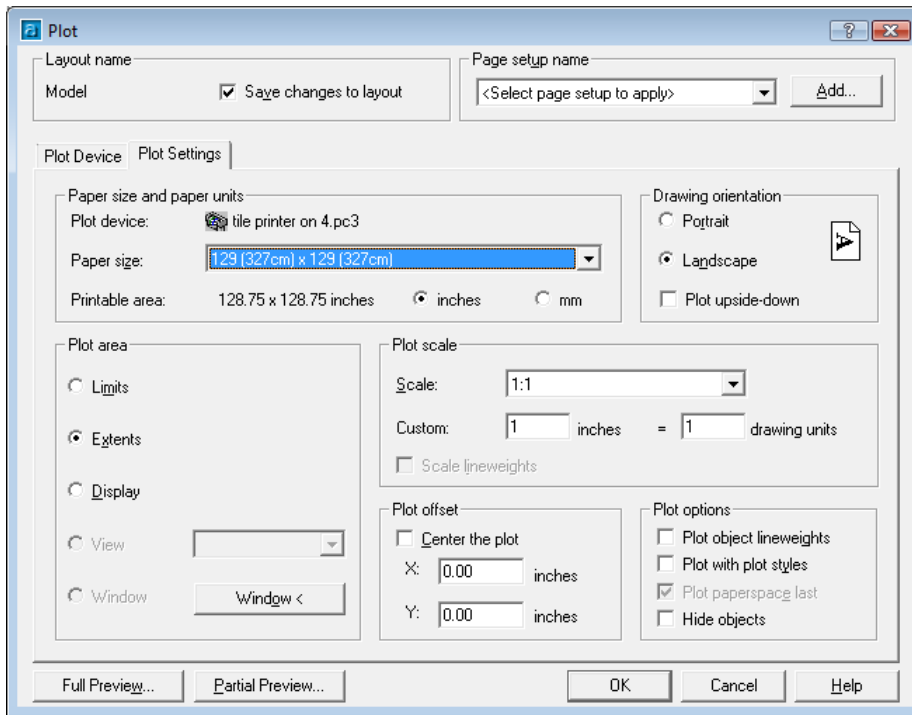
To edit printer driver options double click on the new printer driver “tile printer on 4” in this example.



Click on Device and Document Settings, Custom properties under graphics in listbox and then click on custom properties. At a minimum you will probably want to set unroll media before plot count to 1.



When you click on File -> plot from autocad select plot device and choose newly created pc3 file as printer.



Choose paper size (129 x 129), scale = 1:1, uncheck plot with styles and plot with line weights. Choose either extents or click on window to select objects to print.

Click on OK to send to printer driver.