

Technical Support Bulletin:

Setting up Communication Port in Production Manager

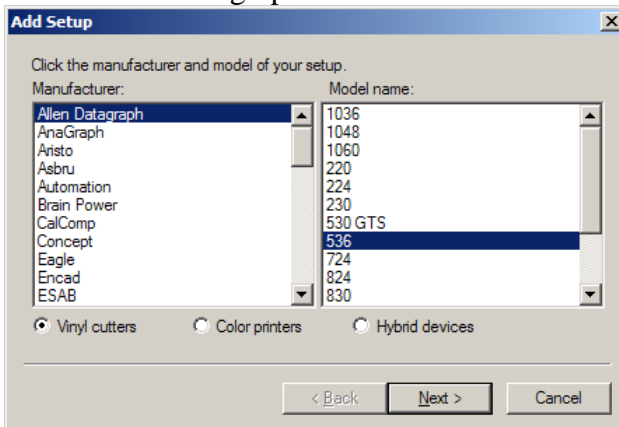
Last Updated December 30, 2004

Abstract: The default handshake method for Flexisign uses too many hardware signals. Use the method below to create the setup.

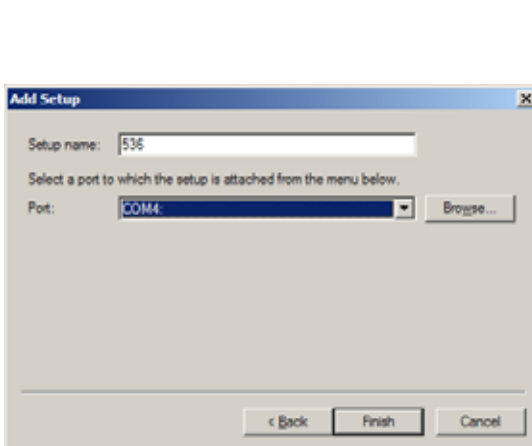
From the Production manager select Setup -> Add Setup



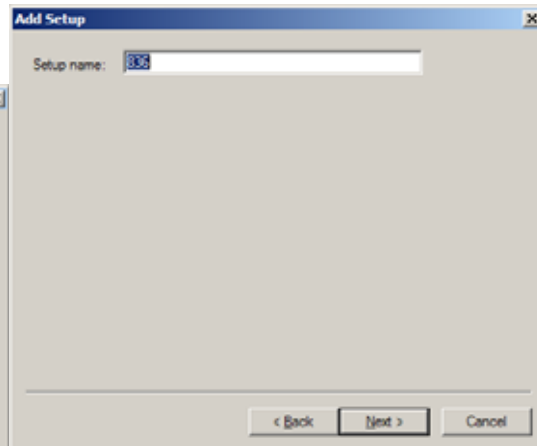
Select Allen Datagraph and the model of the cutter you are using.



Click Next



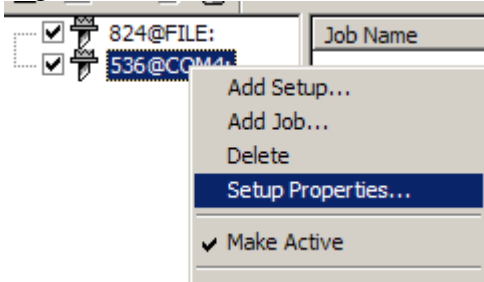
Flexi 7.1



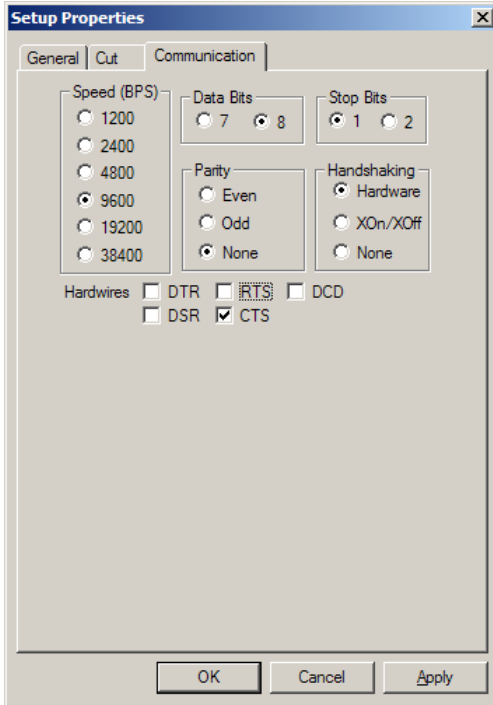
Flexi 7.5V5

Select com port and click on Finish. This adds the 536 on a setup. (Note: flex 7.5v5 skips to port selection and setup on next page.)

Right click on 536@com4 and select Setup Properties

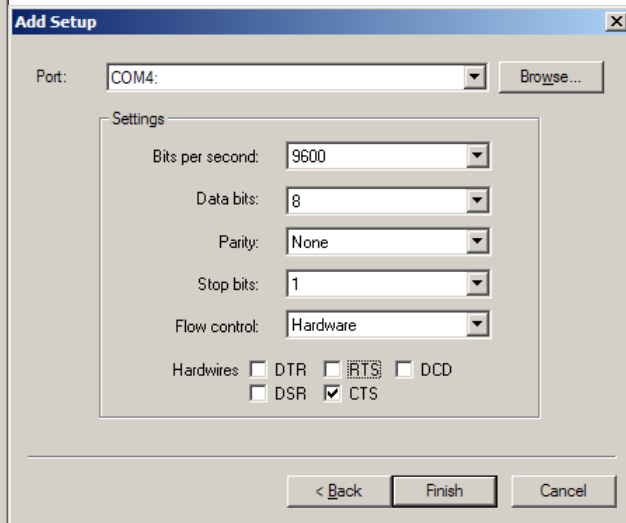


Uncheck the DTR, RTS, DCD, DSR hardwires and check the CTS hardwire.



Flexi 7.1

Click OK



Flexi 7.5v5