

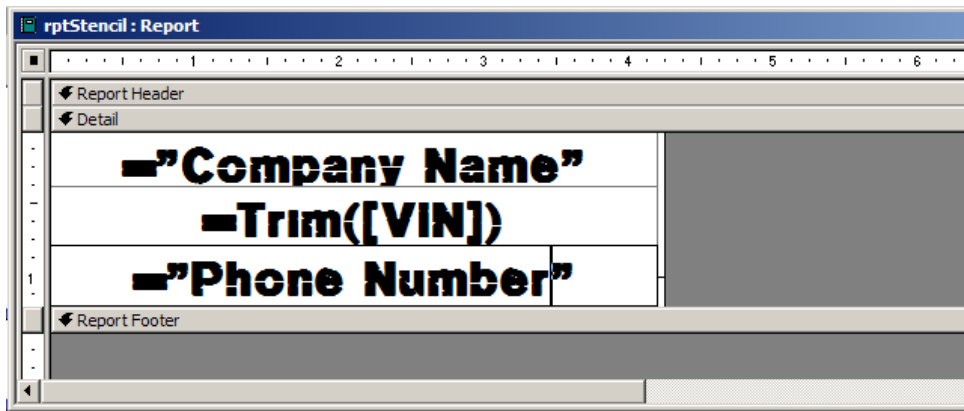
ALLEN DATAGRAPH

Technical Support Bulletin: Text Strings from Access to Allen Cutter

Last Update February 11, 2005

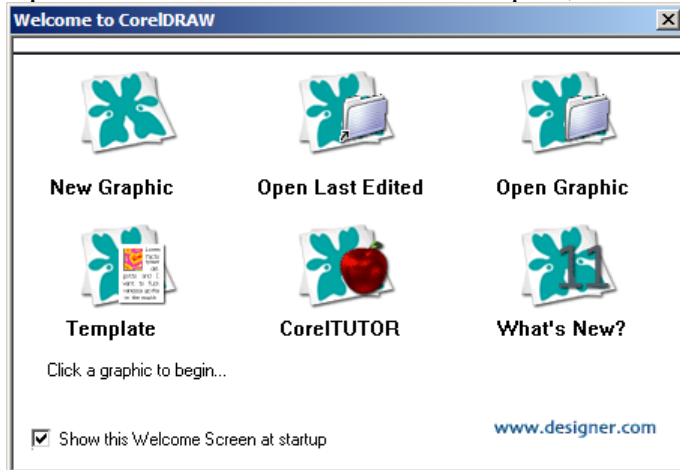
Abstract: Create a report with access and plot string output to Allen Cutter

First Create your report with access. The data for [VIN] comes from the database. For ¼ inch tall letters it was found that font size 25 of the font had a ¼ inch height in CorelDraw.

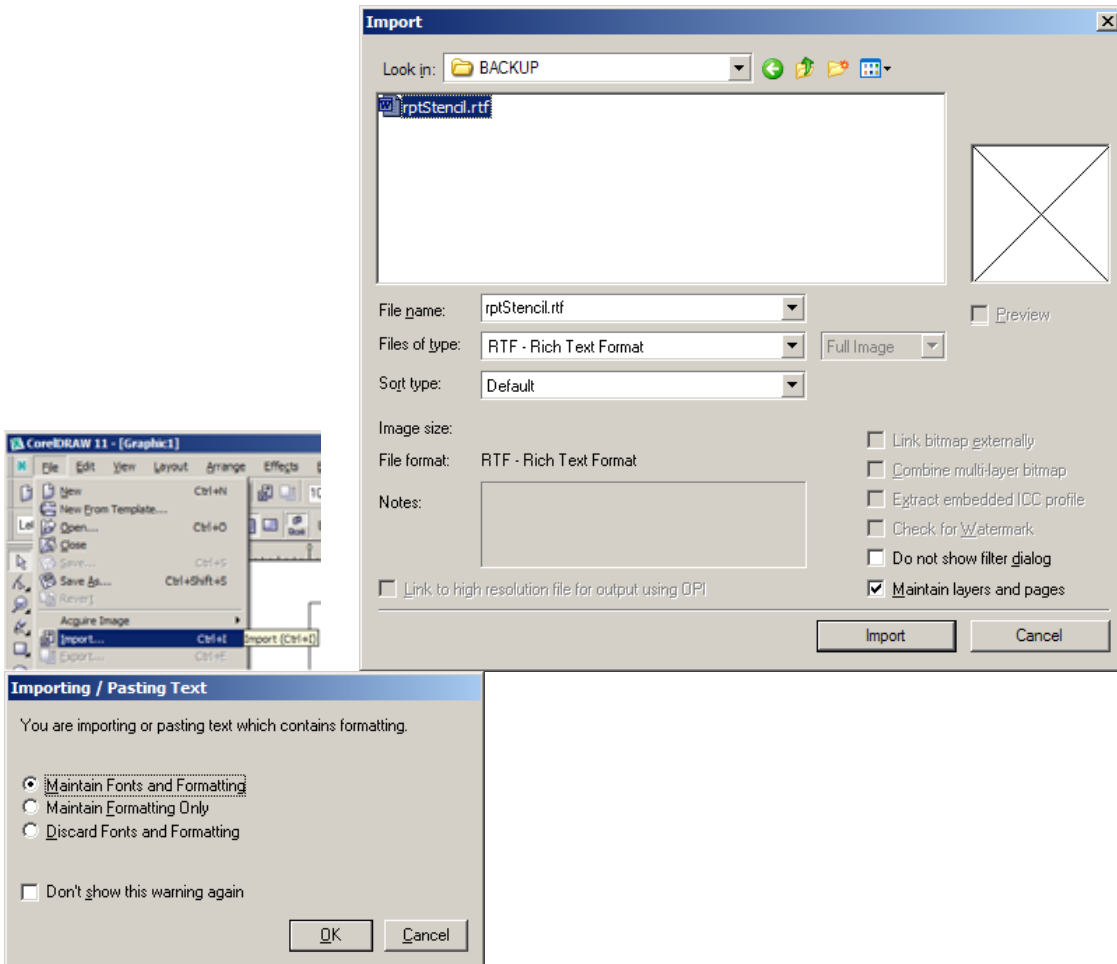


From the report menu right click on the report and select export. Select Rich Text format and press on save key. This saves the report contents as a rtf file so CorelDraw can import the file.

Open CorelDraw and create a New Graphic;

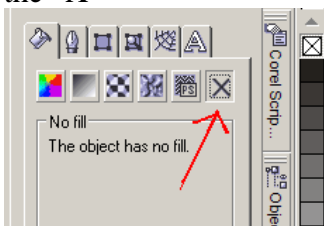


Select File Import



Place the cursor where you want the graphic imported and click the left mouse button. Note: that even though you selected maintain fonts and formatting that it appears that CorelDraw forgets the font and size. So from the font menu select the desired font and enter the size in the font size box.

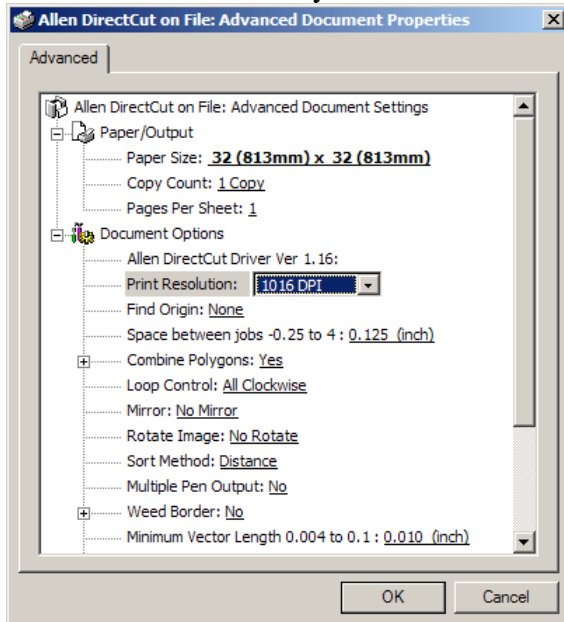
Next using the paint bucket in the object property docker remove the fills by clicking on the "X"



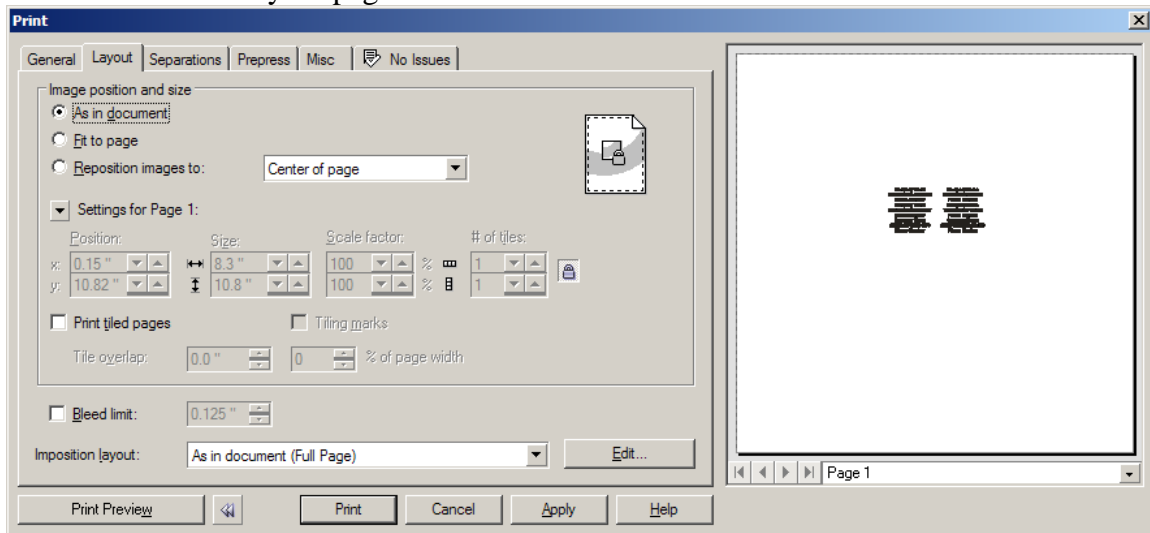
The text will temporarily disappear. Next select the pen nit and change the width to hairline black.



After Installing the Allen Datagraph Direct Cut Printer Driver. Click on file print. Select the Allen DirectCut on x printer. Select .Papersize 32x32 with DPI at 1016. (Note: see other documents where you found this one to print documents larger than 32x32.)

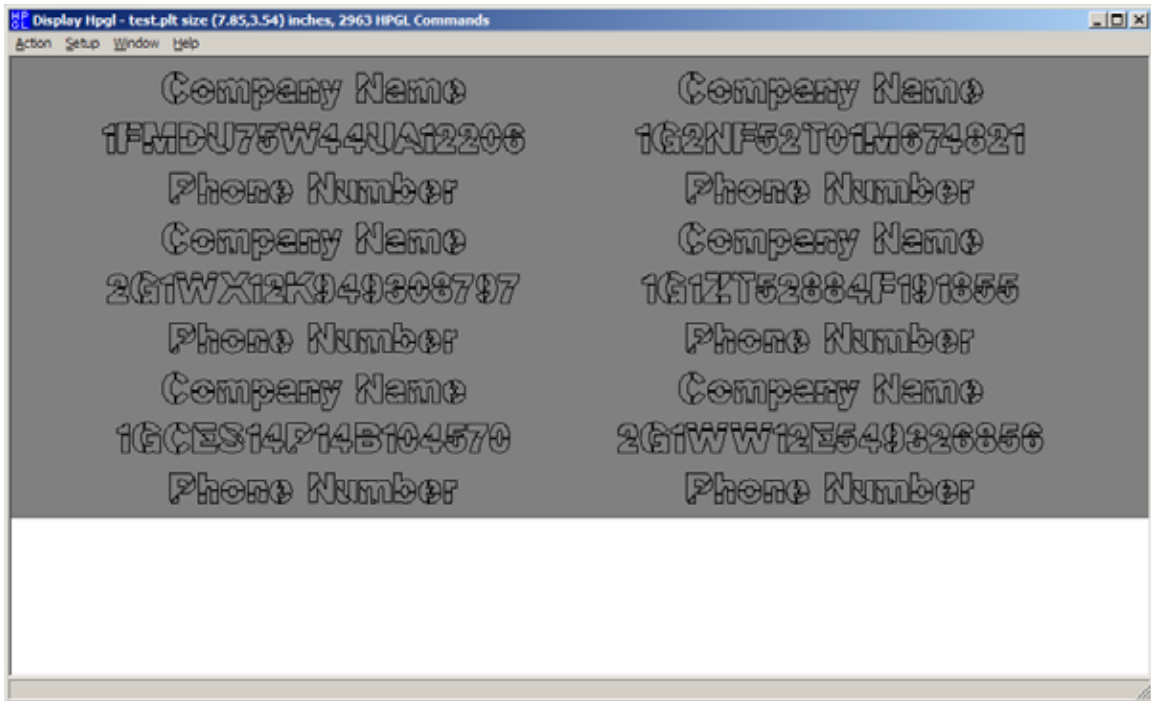


In this example I will print to a file instead of the com port. Be sure the As in document is selected on the Layout page



Then click on print. At this point the cutter would start printing your text on the cutter. Since I selected print to file CorelDraw asked for a filename. I entered one and clicked on OK.

Using the HPGL display program available in the Miscellaneous menu of the tech support page I open the file and display the output on the screen.



Note: the size of 7.85 x 3.54 shows a 3/8 inch letter including space between lines.