

ALLEN DATAGRAPH

Technical Support Bulletin: Using Gerber Omega with Allen Cutters

Last Updated August 26, 2004

Abstract: The Gerber Omega program does not send the correct HPGL commands when sending a plot that contains tiling. A change in the gsp.ini and device.ini file is required to make the Gerber software work correctly. (See also Gerber w Printer Driver [Web Site Copy](#) / [CD Copy](#))

Refer to document Gerber FastFact #: 3560 available at [Web Site Copy](#). The device option for the cutter driver must be changed from 59 to 68 to get the Omega program to send the correct HPGL code for tiling.

1. Close Gerber Omega
2. Using a text editor such as Windows Notepad, edit the file called c:\GSP\SOFTWARE\DEVICE.INI and c:\windows\gsp.ini
3. Scroll through the file until you find the [plotters] section.
4. Locate the following line, and copy and paste it at the end of the list:

```
<HPGLTEMP>=9999,1.016,0,13.00,59,3,1.0,1.0,com2:
```

The <HPGLTEMP> will be replaced with the name of the Allen Datagraph driver. You will be changing one of the values in the line you just pasted. However, the following values in that line do NOT change: 9999 (at the beginning) and 3,1.0,1.0,com2: (at the end). Replace the 59 with 68 to indicate that the cutter supports the Gerber definition of the PG command (Page Advanced)

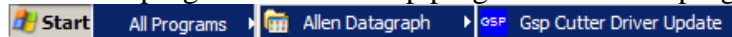
Example Before:

```
MDL-315=9999,1.016,0,13.00,59,3,1.0,1.0,com2:
```

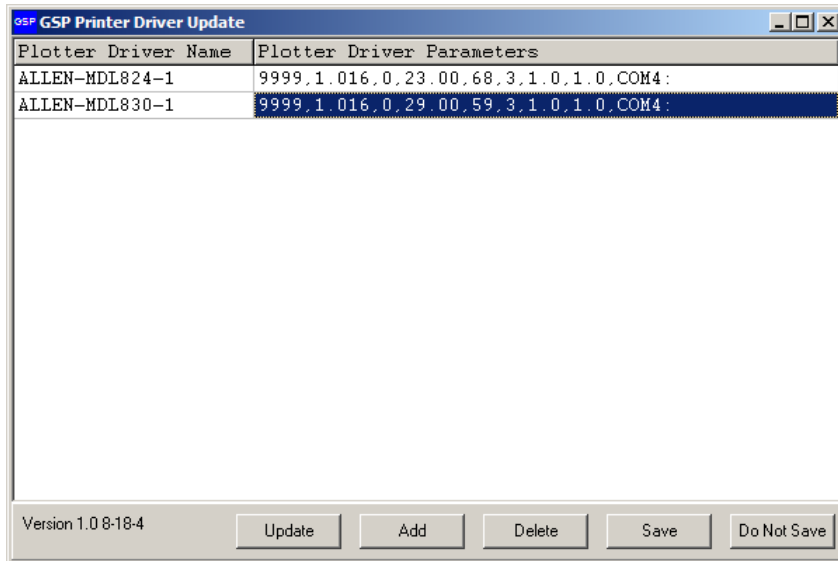
Example After:

```
MDL-315=9999,1.016,0,13.00,68,3,1.0,1.0,com2:
```

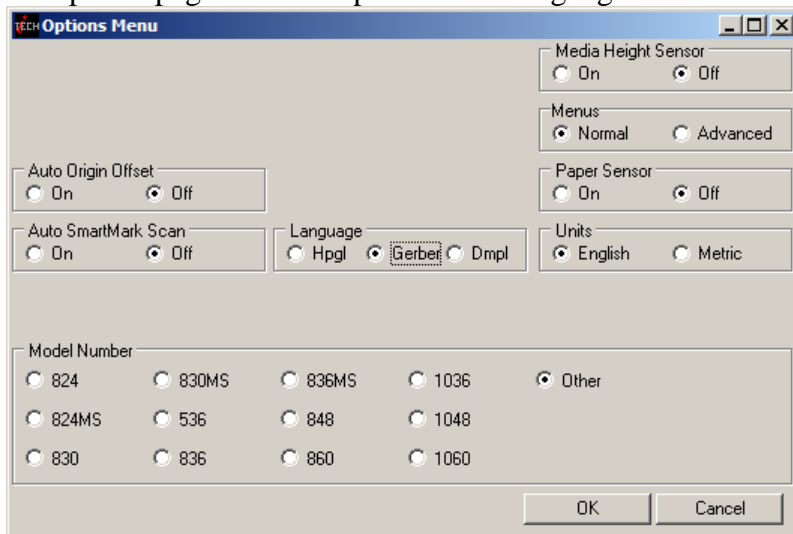
A program to automatically perform this operation is available [Web Site Copy](#) / [CD Copy](#). To install the program run the setup program. Start the program with



To update an existing cutter driver click on the plotter driver parameter box and click on the Update button. This button changes the “,59,” to “,68,” in the plotter driver parameter. You can delete a driver by selecting the driver parameters and clicking on Delete button. You can add a new Allen Datagraph Driver by clicking on Add, selecting the model # and output port and clicking on the OK button. To save the change made to the “C:\windows\gsp.ini” click on Save button. To exit the program without saving the changes click on the “Do Not Save” button.



On options page in remote panel select language Gerber.



This fix requires the following minimum firmware level:
 24 button panel, 315 or 230 models require panel version 2.31
 16 button panel i-TECH build 27
 16 button DFS build 27

Fix not available on 24 button DFS.

Send email request to info@allendatagraph.com for firmware upgrade you can download the new firmware from the Firmware page on the Allen Datagraph web site.

To use Gerber Omega with a SmartMark™ sensor installed see documents on SmartMark or Cad Software Release Notes\Gerber Omega page.