

ALLEN DATAGRAPH

Technical Support Bulletin: Using SmartMark Option with Gerber Omega

Last Updated June 21, 2004

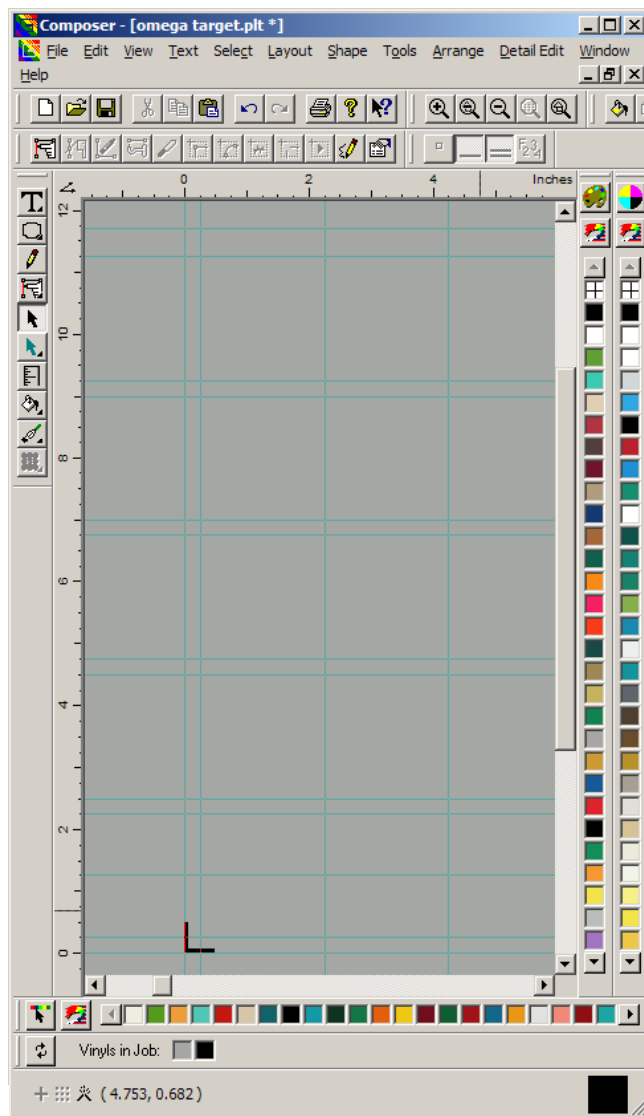
Abstract: This TSB describes the procedure to create artwork and outlines to create labels and contour cut them using the Gerber Edge and the 315 with SmartMark installed.

Scope: The Gerber Omega 2.0 Composer is used to create a row of labels 5 across sized 2 inches by 4 inches. The artwork is then split into two pieces. The outlines are deleted and a print file is created. Loading the complete artwork again, the prints are deleted and an outline file is created. All the files referenced and created by the procedure can be downloaded using this [Web Site Copy / CD Copy](#).

We start by loading OmegaTarget.plt file from the link above into Omega.

The Edge Printer has a height of 11.7 inches so we can place the labels 5 across with $\frac{1}{4}$ inch between the labels. First we create guidelines at the origin, media width and edges of each label. Using the layout menu in Omega composer select and create horizontal lines at (0, 0.25, 1.25, 2.25, 2.5, 4.5, 4.75, 6.75, 7, 9, 9.25, 11.25, 11.7), and vertical lines at (0, 0.25, 2.25, 4.25). The edges of this first label are at vertical 0.25 and 4.25, horizontal 0.25 and 2.25, with the label center at vertical 2.25, horizontal 1.25). After creating the guides lock them with Layout ->

Lock Guide lines. Your Composer screen should now appear as shown at right.



Create text for label:


Select Tools -> Options -> General and check the Suppress fill cuts box. Select the Paint bucket and select black fill. Select the pen nib and select no stroke. Now we center the text in the label area and create a label outline for cutting. Select **T**, change font size to 0.3 and font to Time Bold ACCT A K. Click on the center guideline and type in the text:

Allen Datagraph
SmartMark
with Gerber Omega

Center text by selecting all three lines and use the arrow keys until the center handle is over the center guidelines.

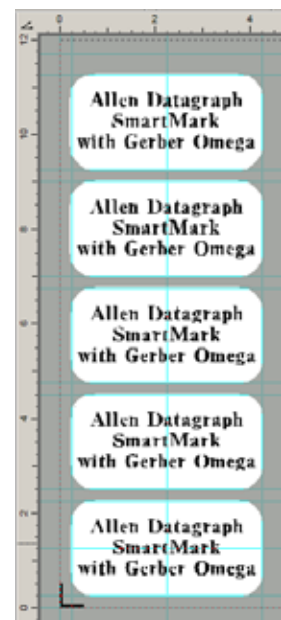
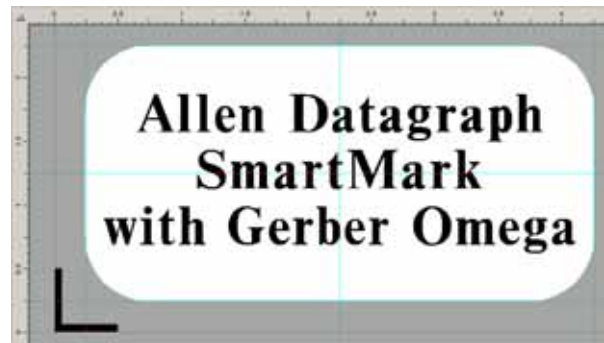
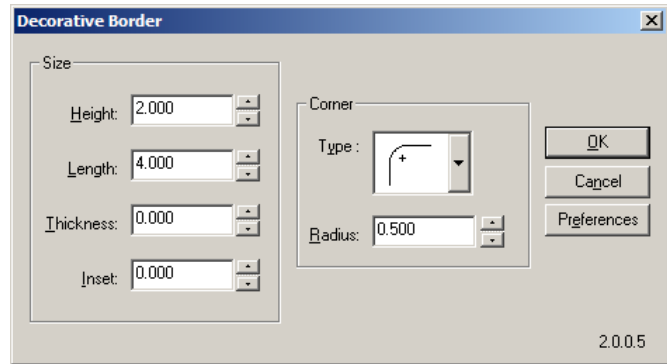
To create the cut line:

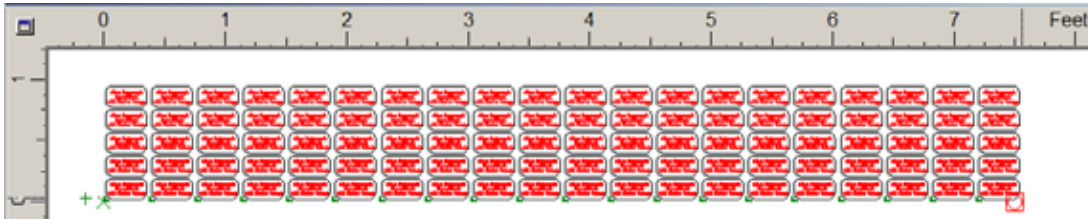
Select Tools -> Options -> General and uncheck the Suppress fill cuts box. Select the paint bucket and select no fill. Select the pen nib and select clear stroke. Uncheck points and scaleable and set width to 0.001.

Select  and draw a rectangle from (0.25, 2.25) to (4.25, 0.25). Then select the rounded corner type and a radius or 0.5 inch.

To create other 4 labels:

Select the rectangle and the 3 lines of text and arrange the 4 objects as a group. Your label should now appear as shown at right. Copy the label up into each guideline area as shown. This is the complete label file containing both the cut line and the printed output. Now save this file as Smart Complete.plt.





To print or send the cut lines:

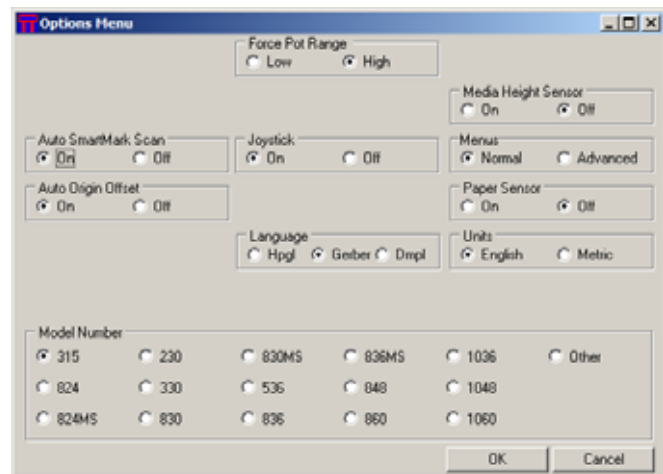
Select File Output All. Set no weed border, no targets (Setup -> Print options -> Targets). To print 100 labels we divide this by the frame size and set repeats to at least 20. You might want extra frames in case of bad printing or cutting. On Layout -> layout set the x gap to 0.25 and Border to 0.0. Select full view we get the 100 labels. Select "File -> Print to Device" to send the printed output to the edge.

To send the cut lines to the cutter:

In the options menu in version 2.33 or later 315 firmware select Gerber language and Auto SmartMark Scan = on.

Train the sensor to the media and align the SmartMark sensor to the outside corner of the printed target.

On the print options menu uncheck the print as process check box before sending cut job (This eliminates the short move at the end of the job moving away from the next target). Using all the other options the same as the print above click on the Cut/Pounce (F8) icon. This will send one copy.



Verify that the knife blade is now over the target of the 2nd frame. If the knife blade is not over the target you can adjust the x gap and resend the job.

For each from press the copy button on the front of the cutter.

If you want more than 1 copy without operator intervention you can start the remote panel and type:

EJ<copies needed>;

Example:

EJ20;

will copy the output 19 more times giving a total of 20 copies.