



Technical Support Bulletin:

Installing a Firmware and/or Remote Panel Upgrade

Last Updated 8-30-6

This procedure details the firmware or Remote Panel upgrade procedure. Normally firmware is only sent to customers when a software problem is reported that has been fixed in a later version of the software.

From time to time Allen Datagraph will recommend that you upgrade your firmware in your Allen Datagraph Machine (Cutter, Engraver, DFS or Sand Blaster). You can download the latest setup by first going to <http://adsi-usa.com> -> Tech Support -> Online Documents -> select product and then find firmware/remote panel link on the page. Then select the firmware on that page that applies to your Allen Datagraph Equipment.

Before running the setup program be sure to exit the older version of the Remote Panel.

All Windows Operating Systems

Run the setup program just by double clicking on the link file. Select Open and then click to run the application when the publisher could not be verified prompt appears. Follow the XP com port setup procedure in TSB:Setup for Window XP to Eliminate E56 Errors [Web Site Copy](#) / [CD Copy](#)

Non-Windows Operating system

Borrow a computer with and Windows Operating System.

The setup program will run to install the Remote Panel and the firmware on your Windows computer. If instructed by the factory to upgrade your firmware, follow the firmware upgrade instructions below. If you were only instructed to upgrade to a new remote panel you have already completed this task and do not need to install the firmware.

To start the Remote Panel double click on the icon on the desktop. If the icon is not present you can create one by finding the program using the explorer and sending the icon to the desktop. See procedure in appendix.

Firmware Installation Instructions:

Only install new firmware if instructed to do so by Allen Datagraph.

Refer to TSB:Print Driver Conflict [Web Site Copy](#) / [CD Copy](#) if you have installed printer driver.

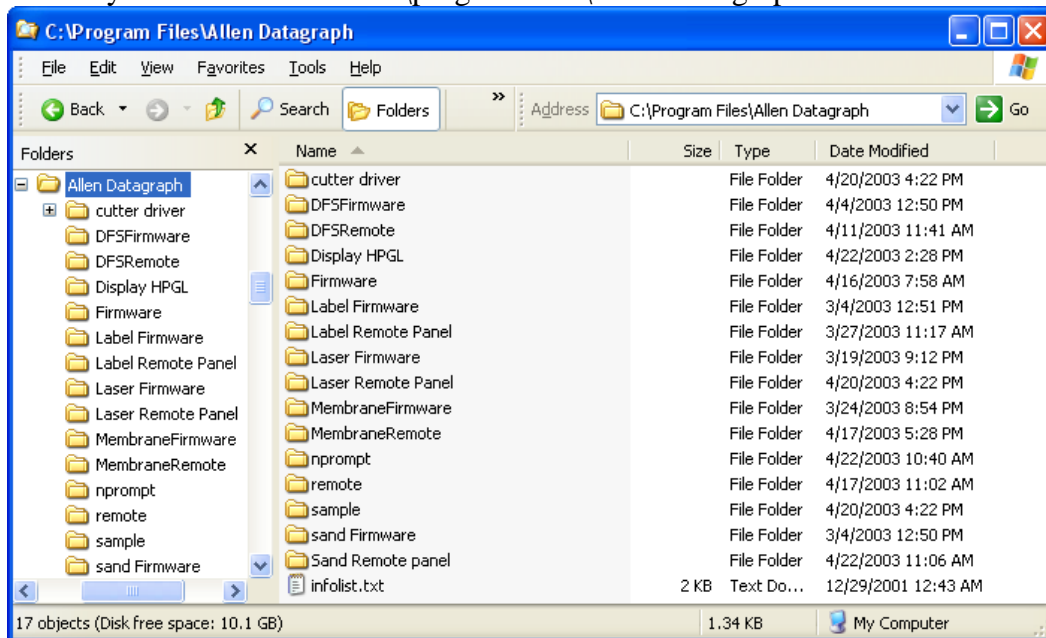
Turn on the Allen Datagraph equipment to be upgraded and connect it to your computer with the supplied serial cable. Start the Remote Panel by clicking on start, program, Allen Datagraph,

Remote Panel. Click on Setup, Com Port and verify that the correct Com port has a check next to its name. Click on Action, Upload Firmware. Select I960?.hex file and click Open. If the upload fails you will be given a backup procedure to follow on the computer screen. After upload of firmware you can turn off the advance menu options on the Setup -> options menu.

APPENDIX

How to recreate a icon on your desktop. Running the setup program creates an icon for starting the remote panel on your desktop. If you have deleted the icon and wish to recreate it you can either run the setup program again or follow the procedure below.

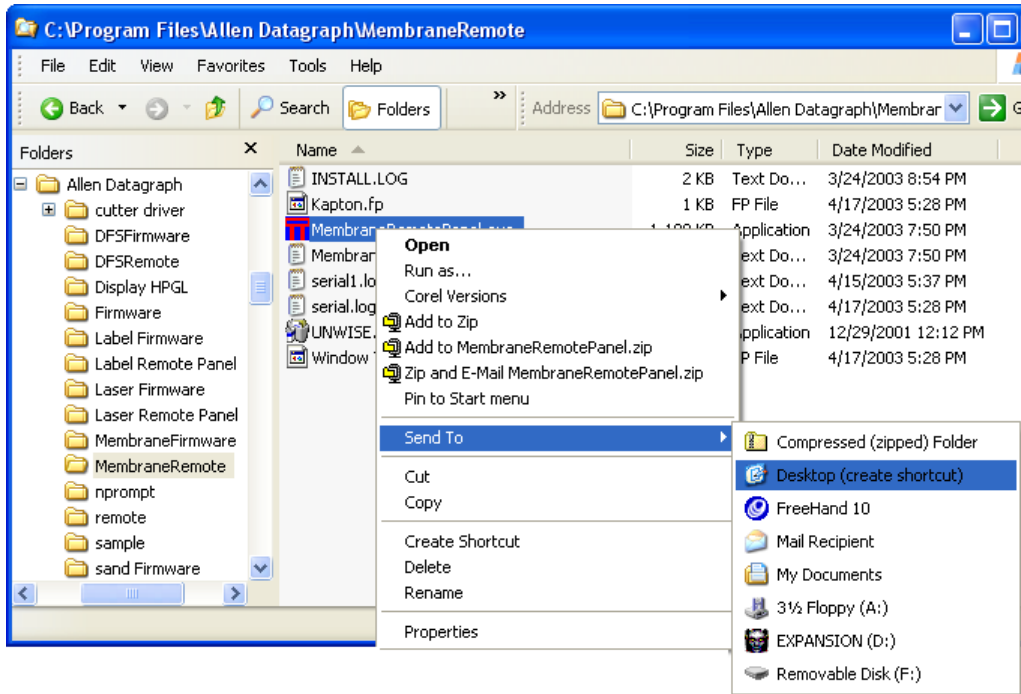
Start windows explorer by right clicking on the start button and clicking explore. Navigate to the directory in the left window C:\program files\Allen Datagraph



You might have more than one remote panel on your computer but most likely you will only have one of the Remote directories above. Select remote panel directory based on table below.

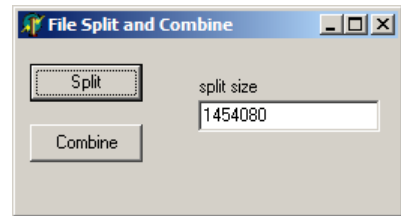
Product	Directory
DFS w/membrane front panel	DFSRemote
DFS w/36 button front panel	Label Remote Panel
Laser Engraver	Laser Remote Panel
Cutter w/membrane front panel	MembraneRemote or i-TECHRemote
Cutter w/36 button front panel	Remote
Quicksand	Sand Remote Panel

I selected MembraneRemote in the next picture. I then right clicked on MembraneRemotePanel.exe.



Right click on Application or exe file, select Send To and Desktop (create shortcut)

How to transfer files without network using splitfile. Splitfile is a utility that takes a single large file and creates pieces of the files that can be transferred on a floppy. To start splitfile click on the [Web Site Copy](#) / [CD Copy](#) and save the target and Open the splitfile application. Next enter the maximum size of the file



pieces 1400000 (A 3.5 inch floppy can contain files up to 1.38 mb of data). Click on split button. Locate the file you want split in pieces. The pieces will have number at the end of the filenames on the new files that are created. Transfer the files, including the splitfile application, using one or more floppy disks to the other machine. On the target machine start the splitfile application. Click on combine. Select the pieces of the file that were split on the source machine. Highlight all the pieces of the file holding down the ctrl key to allow multiple selection of files. Click on Open. Enter the original file name in the save box and click on save to recreate the splitfile as a single file.

