

ALLEN DATAGRAPH

Technical Support Bulletin

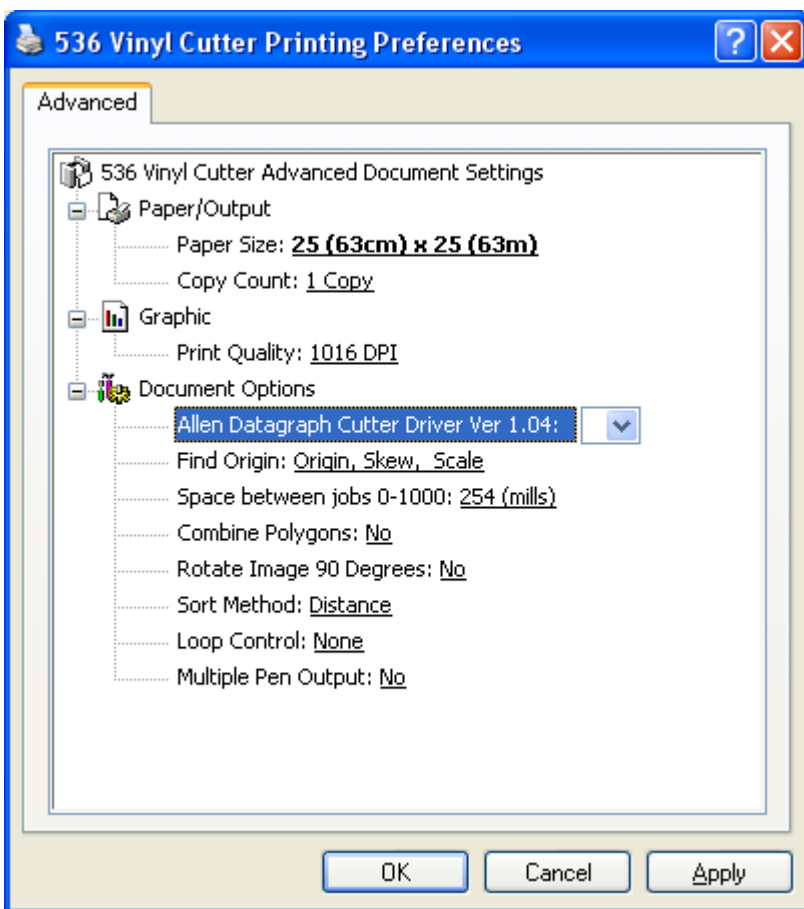
Sample Print File for Printing and Contour Cutting

Last Update 11-25-3

The attached CorelDraw file can be used as a printer test pattern to fine tune the output and test the operation of the SmartMark System. The pattern consists of an origin, skew, and scale target along with seven 9.6 x 3 rectangles.

Directions for use:

Print several copies of the 23x10Test.cdr [Web Site Copy](#) / [CD Copy](#) or 3x5LabelForDfs.zip [Web Site Copy](#) / [CD Copy](#) with Corel on the graphics printer with 1/4 inch spacing. (click on hyperlink to download file)



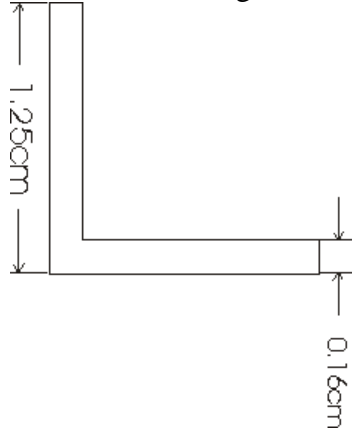
Using CorelDraw, select all and remove the fill.

Print the file again to the cutter using the settings below.

The result from the printer driver output to file is 23x10Test.plt [Web Site Copy](#) / [CD Copy](#)

Recommend settings for SmartMark:

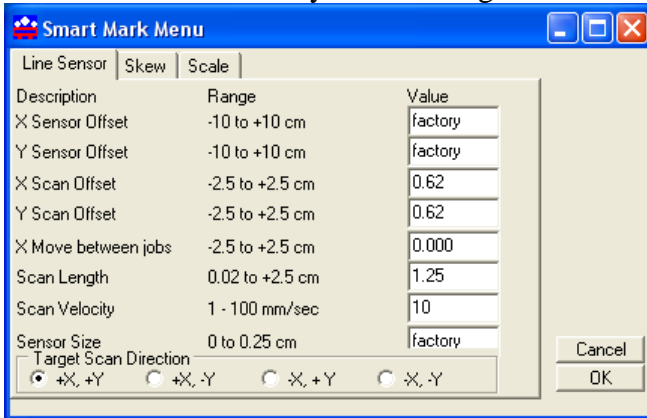
Recommended target:



Draw an L shaped object with dimensions as shown. (Legs 1.25 cm/0.5 inch long and width (0.16 cm/ 0.0625 in). When printing the target select a black solid fill. When cutting the target select no-fill. See links on referencing page for CorelDraw and Adobe Illustrator recommended targets.

The FO debug is always on (for 24 button panel it must be turned on with “label interconnect” menu, “FO LED debug on” in the remote panel). After the FO command scans each target the x led (unload on 24 button panel) and the y led (rotate led on 24 button panel) indicate the status of the scans. These LED’s should be out. If they are on then the associated target was not correctly found.

Use the following initial settings in the setup -> line sensor menu. If you prefer English units rather than metric you can change the units on the setup -> options page.



For the recommended target, the scan length should be 1.25 cm / 0.5 inch

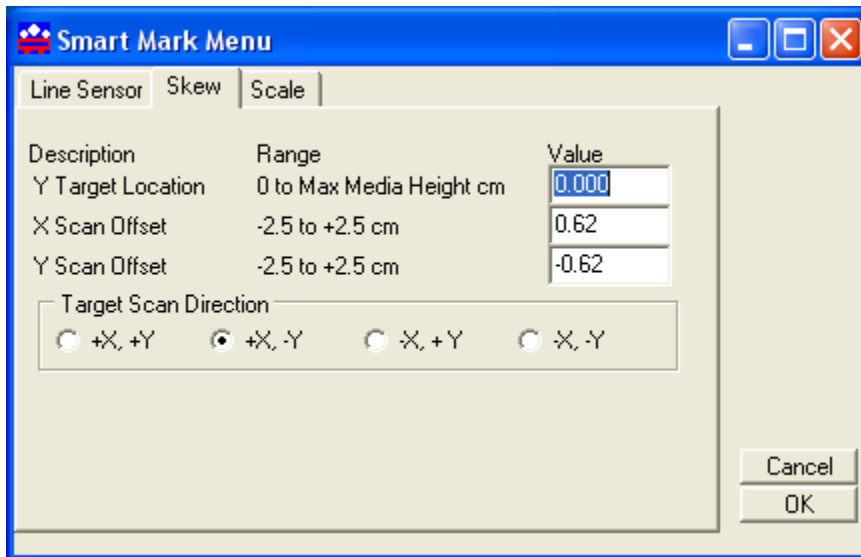
The origin scan offsets should be 0.62 cm./ 0.25 inch

The origin scan direction should be +x,+y

If you own a digitizing site you can perform the “calibrate to printer” and “smart mark setup” available in the diagnostic menu. These functions automatically determine the x/y sensor offsets and the sensor size parameter (factory in above picture). If you do not have a digitizing site these parameters must be configured manually. You should record

these parameters when you get your machine as these parameters have been measured at the factory and are different for every machine.

If you are running multiple jobs with the same cut image the SmartMark software expects that the knifepoint will be on the origin target of the next frame. You can use you CAS systems (space between jobs) parameter or the x move between jobs parameter on the line sensor page above to make sure this happens.

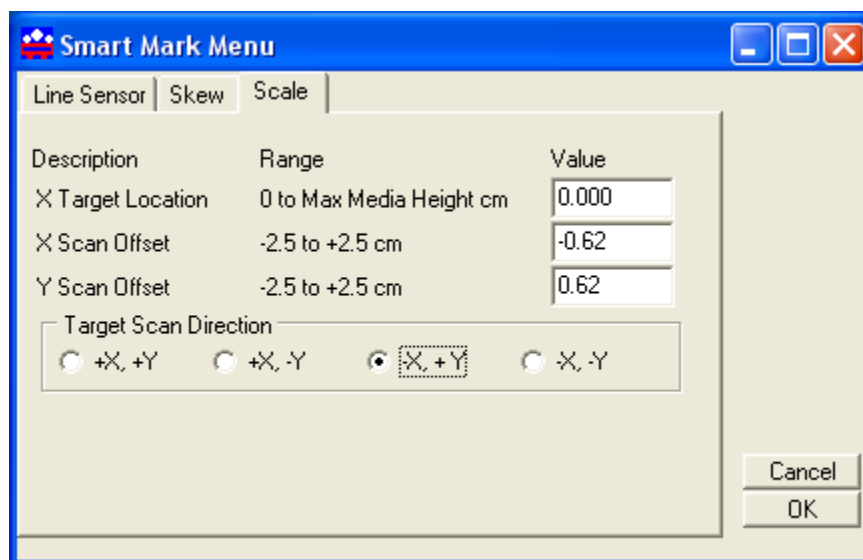


The skew scan offsets should be (0.62, -0.62)

The scan direction should be +x, -y

The y target location is used when you are using the prefix string bj1;fo-1,-1 in cas systems that do not support the SmartMark. The -1 is replaced with the y target location.

If you are using a cas system or the DirectCut printer driver you can ignore this parameter.



The scale scan offsets should be (-0.62, 0.62)

The scan direction should be $-x,+y$

The y target location is used when you are using the prefix string `bj1;fo-1,-1` in cas systems that do not support the SmartMark. The `-1` is replaced with the y target location. If you are using a cas system or the DirectCut printer driver you can ignore this parameter.

This file is for the DFS and is 4 3x5 labels target to target is 5.5 x 13.25