

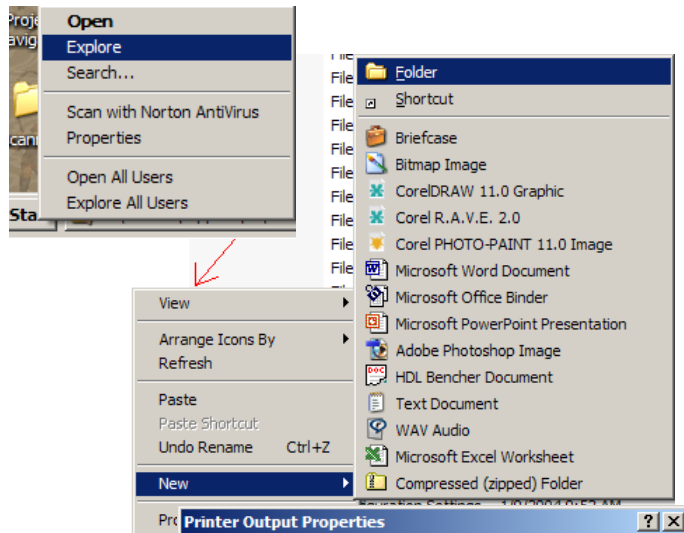
ALLEN DATAGRAPH

Technical Support Bulletin: Directory Selection Printer Driver File Output

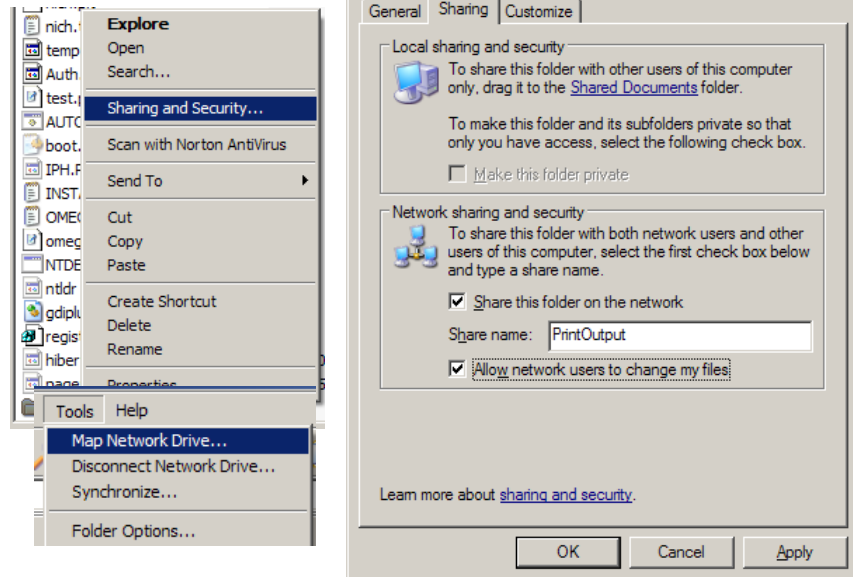
Last Update September 15, 2004

Abstract: When writing files from some cad programs to the printer driver the output file request does not allow a directory selection. This TSB shows how to create a shared directory and mount it on a drive letter to simplify output file directory selection.

Start the Explorer by right clicking on the start button and selecting explorer. Create a new directory by right clicking on a white area in the right window and select new folder. Type in a new name for the directory E.g. "PrintOutput".



Right Click on the PrintOutput directory and select Sharing and Security. Add a check for share this folder and allow network users to change my files in the directory. Next using the Tools menu select map network drive.



Pick a drive letter you would like to use as a 2-character shortcut to the directory. Then click on browse and find the PrintOutput directory on the computer you created the directory on. Click on OK on the Browse for folder and check the “Reconnect at logon” box. Then click on finish. When the print driver asks for the output file name you can use the drive letter as a shortcut to the directory. E.g. “v:output.plt”

