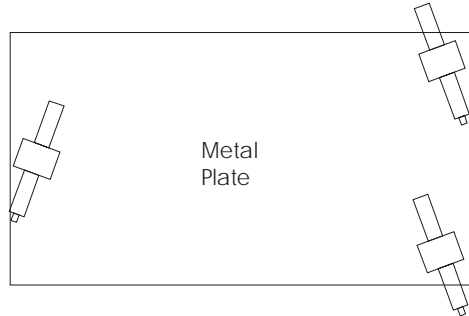


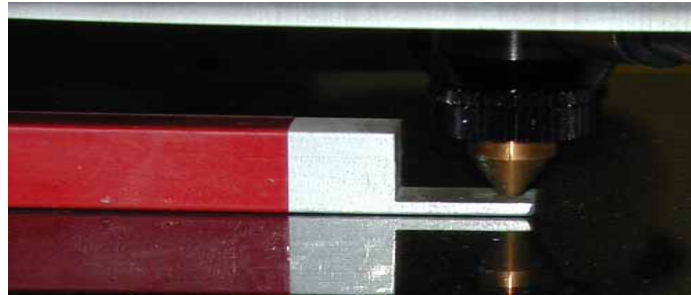
Engraver Loading Instructions

The purpose of this section is to set the distance between the end of the lens and the media to be engraved to be level with respect to the arm at the focal distance of the lens.



To perform this operation we will use the, Focus Spacing Tool, Leveling/Focusing scissor jacks, and the 4x4 and 2x4 blocks to build a stable tower to place the media to be engraved. Place the metal plate directly on the conveyor. Build up a stack of 4x4 and 2x4 top plate and media to be engraved so that it is 0.5 to 2 inches below the lens.

Next with the laser pointer on align the edged of the media with axis of the engraver so that the laser tip when moved with the joystick follows the edge of the media.



Place the three leveling jacks under the metal plate as shown. Using the ratchet wrench adjust the height of the plate so that the Focusing Spacing tool will just fit between the media to be engraved and the lens tip.

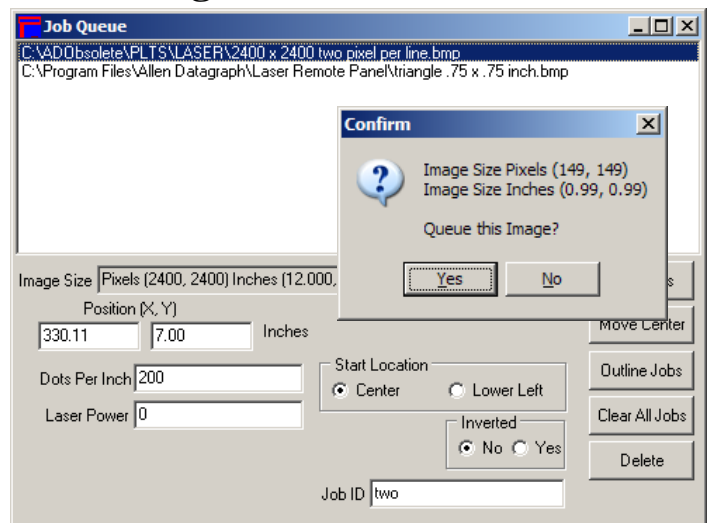
Using the joystick position lens over each jack and adjust height/focus with the jack below it. Changes in the height of one jack may slightly change the height at another jack so you must repeat each height adjustment for each jack.

If you are running more than one job at a time you will need a set of jacks, two plates and additional lumber pieces for each addition engraved piece.

Burning a Raster Image

Most images must be centered on the media that is to be engraved. To position the engraver above the image use a ruler to find the center for each axis and move the mirror assembly with the joystick so the brass tip is at the center of the media.

Use Action -> Open Graphic Image in the Laser Remote Panel to open the image to be engraved. Then use Action -> Queue Opened Image as Job 150 DPI. (The DPI chosen must match the DPI setting for the design.) This will read the current position as the center of the engraving. The program will then display



the size of the image to be burned in pixels and inches/cm. Answering yes will add the job to the queue.